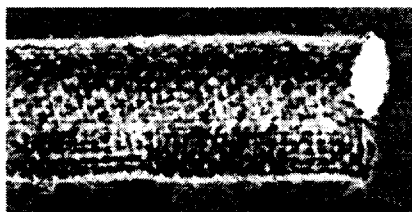
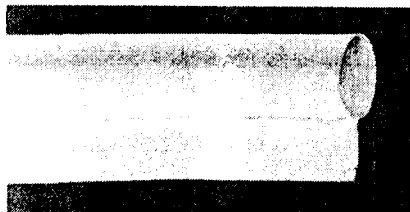


EDGE ROLLS

All edge rolls are available in 50 foot pieces or by the full roll.

EDGE ROLL - FRAMING

- Edge rolls prevent cover fabrics from wearing against the sharp edges of furniture frames.
- Various sizes can be stapled or nailed along frame edgings on arms, front rails, backs - wherever cover fabric would otherwise be subject to abrasive wear against the frame itself.



White Edge Roll

- Spun-bonded polyester core with a tough spun-bonded white polyester covering.
- Tough 4 ply lip for stapling or sewing.

101701 1/2" White Edge Roll (1000 ft./roll)

101705 3/4" White Edge Roll (600 ft./roll)

101706 1" White Edge Roll (500 ft./roll)

101704 1 1/4" White Edge Roll (450 ft./roll)

Burlap Edge Roll

- Spun-bonded polyester core covered with a traditional 10 oz. burlap provides extra firmness and toughness. Tough 4 ply lip.

108301 1/2" Burlap Edge Roll (1000 ft./roll)

108303 3/4" Burlap Edge Roll (600 ft./roll)

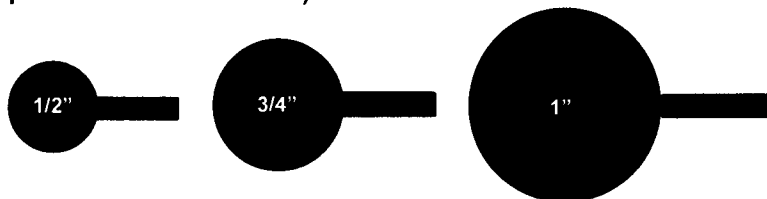
108305 1" Burlap Edge Roll (500 ft./roll)

Trimflex Styrofoam Edge Roll (Approximate sizes shown)

107339 1/2" Trimflex (1000 ft./roll)

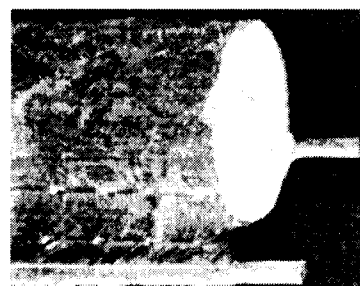
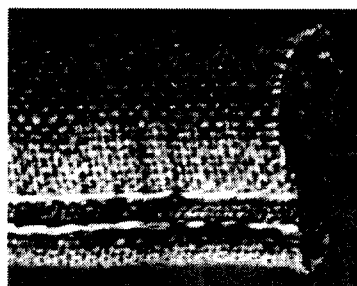
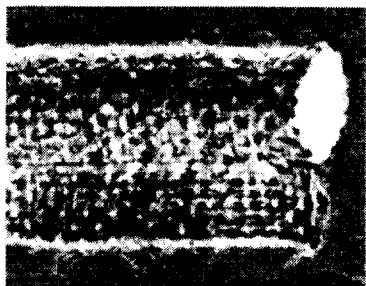
107340 3/4" Trimflex (500 ft./roll)

107341 1" Trimflex (500 ft./roll)



EDGE ROLL - SPRINGING

- Spring edges close the gap between the deck-edge and cushion to help keep cushions in position. They are attached by sewing or hog-ringing to the top front edge of the spring unit.



Spring Edge Roll

- Spun-bonded polyester core with a 10 oz. burlap cover.
- Tough 4 ply lip for attaching to spring construction.

108307 #2 1 1/4" Spring Edge Roll

Cel-U-Flex Spring Edge

- Permanent-shaped precision construction consists of two all-jute cores covered in strong 10 oz. burlap. 4 ply lip.

108320 1 1/4" Cel-U-Flex

Perflex Clip-On Edge Roll

- Built-in positioning stakes for hog-ringing to spring assembly, or for sewing or stapling to hard edge designs. Spun-bonded poly core.

108304 1 1/4" Perflex Clip-on Edge